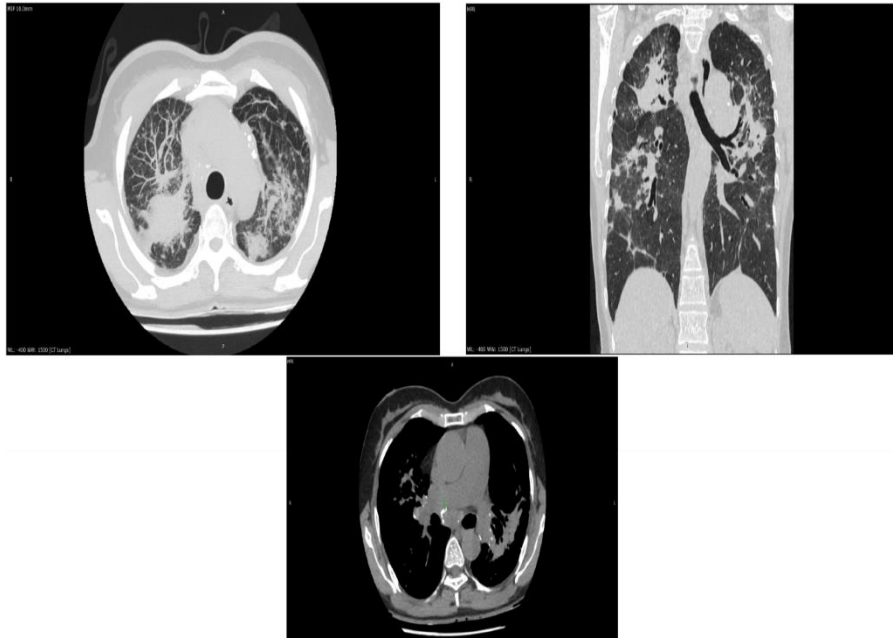




**Supplementary Figure 1.** Chest radiograph of our patient showing bilateral mass-like opacities with irregular margins across all lung field but mainly in the upper and mid zones



**Supplementary Figure 2.** HRCT of our patient showing mass like opacities, mainly in the bilateral posterior upper lobes, associated with traction bronchiectasis. Small rounded one-to-three-millimeter nodules are seen distributed throughout the lungs which were most numerous in the upper lobes. There was no tree-in-bud appearance. The hilar and mediastinal lymph nodes were enlarged with bilateral eggshell type classifications which can be seen in the mediastinal window.